

# engineering EXPO

## ENCHANTING CHENNAI

8-9-10-11 December 2011  
Chennai Trade Centre

Chennai, the eye of Tamil Nadu is a global investment destination. Strong presence from major industry verticals like automotive manufacturing, machine tools, FMCG, telecom, electronics, durables, light & medium engineering, construction & earthmoving and financial services mark the industrial growth of the city. Availability of educated manpower, robust infrastructure, connectivity to the world, favourable policies etc. are some of the deciding factors that have made the city a preferred destination. Engineering Expo has lived up to its commitment to work in the interest of the growth of every SME in the region.

### Exhibition USP

- A complete SME show for the manufacturing industry
- A preferred destination for buying & selling, networking, tie-ups & exchange of ideas towards growth
- The vast product profiling of the show makes it a perfect multi-purpose networking platform
- 360° marketing leaves no stone unturned to reach out to the buyers

### Highlights to 2010-11

- 210+ Exhibitors
- 11979+ Visitors
- 5418+ Leads Generated
- ₹34 cr+ Business Transacted
- 87000 kg+ Machinery Moved in
- 1402+ Products / Services Displayed

### Exhibitor Categories

- Automation
- Electrical & Electronics
- Hydraulics & Pneumatics
- Instrumentation
- IT Products & Services
- Machine Tools & Accessories
- Material Handling Equipment
- Plastics & Packaging
- Process Plant Machinery & Eqpt

### Visitor Categories

- Auto Components
- Automation technology
- Automotive OEs
- Diesel engines
- Electrical & electronics
- Healthcare & medicare
- Instrumentation
- IT & allied services
- Logistics & materials handling
- Medicine
- Petrochemicals
- Pharmaceuticals
- Power generation
- Power transmission products
- Textiles & apparels

Rudrapur

Ahmedabad  
Indore

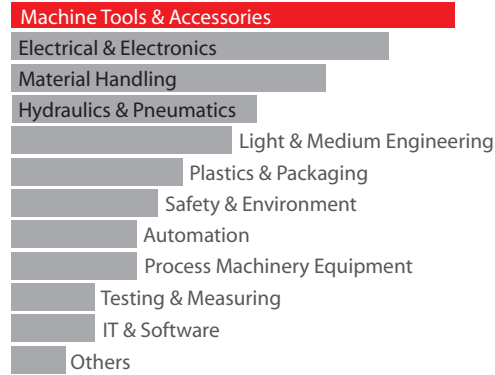
Aurangabad

Pune

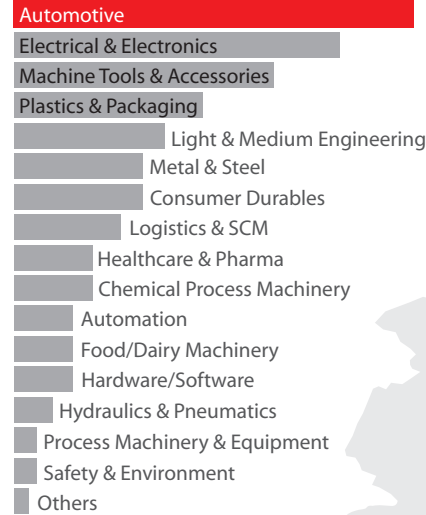
Chennai

# Industry Wise Analysis 2010-11

## Exhibitors Profile

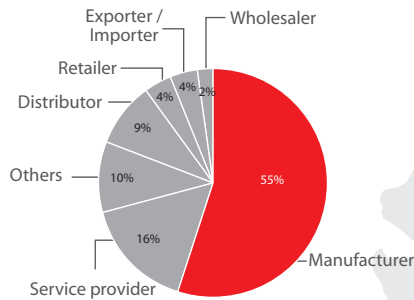


## Visitors Profile

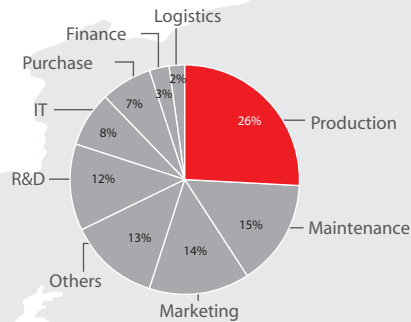


# Visitor Analysis 2010-11

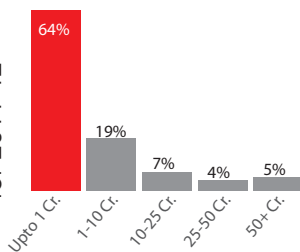
## Line Of Business



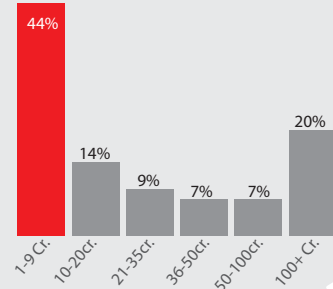
## Department Wise



## Proposed Investment in Plant & Machinery for 2011-12



## Annual Turnover



# Marketing Vehicles

## Direct Mailer



## Websites & Online



## Invitation



## Telecom



## Brochure



## Multi-city PR Campaign



## Magazine Advertisement



## TV Commercials & Tickers



## Press



## Outdoor



# Stall Rates

• Shell : ₹ 8500/- • Bare: ₹ 8000/- \*Taxes extra, as applicable

# Contact

**Infomedia 18**

**Infomedia 18 Ltd**

Ruby House, A-Wing, J K Sawant Marg,  
Dadar (W), Mumbai 400028

T +91 22 30034651

M +91 98195 52270

S EXPO to 51818

W [www.engg-expo.com](http://www.engg-expo.com)